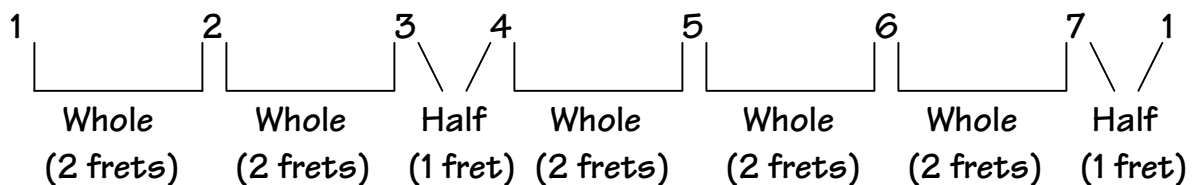


Figure 1: Interval Pattern for the Major Scale

The major scale is the basis of all music theory! Once you know the pattern for the major scale and where the half-steps are, you can figure out the name of any note on the banjo fingerboard. Also, you will see why we end up with sharps or flats in some key signatures.

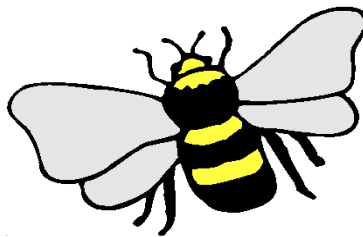
What is a major scale?

All major scales have the same pattern of whole and half steps: Whole, Whole, Half, Whole, Whole, Whole, Half. This pattern is what gives that “do re mi” sound we are all so familiar with. So, no matter what note we start with, the major scale looks like this:



Where are the half steps?

To remember where the half-steps are think of a BEE to help you remember the letters B and E.



BEE

Any two consecutive notes have a whole-step (two frets) between them except for two pairs: B&C and E&F which have a half-step (one fret) between them.

For all starting notes, if we went through and adjusted the notes (making them either sharp or flat when necessary) to make them fit this pattern we would generate all of the major scales.